

DOOLY COUNTY COMMISSIONERS
AGENDA
Thursday, May 3, 2012

- 9:00 AM PRAYER
PLEDGE OF ALLEGIANCE
CALL TO ORDER
APPROVAL OF AGENDA
BUSINESS SESSION
- 9:30 AM PUBLIC HEARING
- 9:45 AM SYLVESTER GRANVILLE
- 10:00 AM GRAYLEN HALL, DOOLY COUNTY N.R.C.S. OFFICE

ITEMS OF BUSINESS

1. Minutes of the April 19, 2012 Regular Meeting.
2. Budget/Financial Report.
3. Ms. Tammy Godfrey Arnott has applied for a license for the Retail Sale for Off-Premises Consumption of beer at Hope's Diner & BBQ at 824 Pinehurst-Hawkinsville Road. A Public Hearing will be held on May 3rd.
4. At the April 19th meeting, Mr. Rhett Holmes requests a reduction in the property taxes for Woodward Apartments in Vienna.
5. Mr. Joe Owens requests that the County abandon Old Hawkinsville Road.
6. Agenda Policy.
7. Request from the Town of Byromville.
8. The Georgia Department of Transportation has recently inspected all of the bridges in the County. GDOT has submitted a report that reflects the results of these inspections.
9. Commercial garbage collection.
10. Mrs. Bertha Thomas has resigned from the Department of Behavioral Health & Developmental Disabilities - Region 6 Planning Board. The County Commissioners must appoint someone to fill this vacancy.

11. On the DFCS Board, the term of Mrs. Patsy Carter expires 06/30/2012.
12. On the Library Board, the terms of Mrs. Elaine Johnson and Mr. Gary Turner expire 06/30/2012.
13. On the West Central Regional Mental Health, Developmental, & Addictive Diseases Board, the term of Mrs. Felita Bryant expires 06/30/2012.
14. In order to maintain Qualified Local Government Status, the Georgia Department of Community Affairs requires Dooly County and the six municipalities to update their Comprehensive Plan this year. If this update is not performed, the County will not be eligible for many State Grants, Loans, and Permits.
15. Dooly County is accepting proposals for the installation of a new metal roof on the Northside Senior Center in Unadilla. Specifications are available at the Dooly County Permits Office. The deadline for proposals is 5:00 PM on Friday, May 18th.
16. The next Regular Meeting of the Board of Commissioners is scheduled for Thursday, May 17, 2012 at 9:00 AM at the Dooly County Commissioners' Office at 113 N. Third Street in Vienna.

DOOLY COUNTY BOARD OF COMMISSIONERS
REGULAR MEETING April 19, 2012 Page 1 of 5

The regular meeting of the Dooly County Commissioners was held this date at 9:00 a.m. at the Dooly County Commissioners office. Members present were: Vice Chairman Charles Anderson, Commissioner David Barron, Commissioner Eugene Cason, Chairman Terrell Hudson, and Commissioner Harry Ward. Also present was: Administrator Stephen Sanders, Clerk Linda Woodson, Vienna News Observer, Tim Franzen and Cordele Dispatch, Becky Crissman.

CALL TO ORDER

Chairman Terrell Hudson called the meeting to order at 9:00 A.M.

PLEDGE OF ALLEGIANCE

The Pledge of Allegiance was given by all.

PRAYER

Commissioner Ward led the Board in prayer.

APPROVAL OF AGENDA

Upon motion by Commissioner Cason and seconded by Vice-Chairman Anderson, the board voted unanimously to approve the agenda as prepared with a correction by Administrator Sanders and a discussion by Commissioner Barron.

MINUTES

Upon motion by Commissioner Anderson and seconded by Commissioner Cason, the Board voted unanimously to approve the minutes of the April 5, 2012 regular Meeting.

FINANCIAL REPORTS

The Financial/budget was distributed to each Commissioner.

NORTHSIDE SENIOR CENTER

Gary Houston, Dooly County Building Inspector has prepared specifications for the installation of a new roof to the Northside Senior Center in Unadilla, Georgia. Upon motion by Vice-Chairman Anderson and second by Commissioner Barron, the Board voted unanimously to authorize Administrator Sanders to advertise for bids for this project.

DOOLY COUNTY BOARD OF COMMISSIONERS
REGULAR MEETING April 19, 2012 Page 2 of 5

WOODARD APARTMENTS

Rhett Holmes, President of IDP Housing LLC, requests that the Dooly County Commissioners reduce the property taxes for Woodward Apartments in Vienna. Chairman Hudson instructed Mr. Holmes that it would be necessary for the county attorney to look into this matter. This request was tabled until the next meeting.

DOOLY COUNTY DFCS

Debroah Smith, Dooly County Director of Department of Family and Children Services met with the Commissioners. She gave a brief annual report for the Department of Family And Children Services. She informed the Commissioner that her agency continues to provide a great number of services to Dooly County that includes, Child Protective Services, Child Welfare Services, Adoption Services, Food Stamp Services Taniff Employment s and Medicaid Services. She informed the Commissioners that April is Child Abuse Preventive Month in Dooly County and requested them to adopt a Proclamation in honor of Child Abuse Prevention Month. Administrator Sanders read the Proclamation. Upon motion by Chairman Hudson and second by Commissioner Cason, the Board voted unanimously to adopt the Proclamation declaring April 1st thru April 30th, as Child Abuse Prevention Month.

UNADILLA HOLDING COMPANY, LLC.

Mr. Stephen L. Cramer has applied for a license for the Retail Sale for On-Premises Consumption of beer/wine at Unadilla Holding Company, LLC at 50 Highway 230. This discussion was held pending the approval of the criminal background by Dooly County Sheriff Department. Administrator Sanders reported that the criminal background was returned no problems. Upon motion by Commissioner Ward and second by Commissioner Cason, the board voted 4 to 1 (Commissioner Anderson abstained) to approve the license for Unadilla Holding Company.

SYLVESTER GRANVILLE

Sylvester Granville met with the Commissioners to discuss concerns about the Public Work Department.

DOOLY COUNTY BOARD OF COMMISSIONERS
REGULAR MEETING April 19, 2012 Page 3 of 5

JULY 4th HOLIDAY

Administrator Sanders reminded the Board that July 4th holiday falls on Wednesday this year and the board meeting is Thursday, July 5th. Does the Board choose to meet July 5th or July 12th? The Board members unanimously agreed to meet Thursdays, July 12th for the month of July.

NANCY DANIELS

Nancy Daniels of the Flint Humane Society gave an updated report on the service they have provided in the last year. They continue to shelter and provide for dogs and cats. Ms. Daniels reports that the Flint Humane Society has four board members, which should be five to operate efficiently. She informed them that she has resigned as president of the Humane Society and would like to form a new organization under the name of Dooly Animal Rescue and Placement. Her request to the Commissioners is that they cancel the present lease with Flint Humane Society and sign a new lease to Dooly Animal Rescue and Placement. Chairman Hudson recommends that the Commissioners meet with the four present board members before any changes be considered. Administrator Sanders will arrange a meeting with the board members and the Commissioners, before the end of this month.

COMMERCIAL GARBAGE TRUCKS

Administrator Sanders reported the 1995 Mack Commercial Garbage trucks suffered extensive fire damage earlier this month. This vehicle served as the backup for the commercial garbage collection program. The cause of the fire is believed to have been from a hydraulic hose rupture in the engine compartment. The driver, Sam Anderson was not injured. The insurance company has been notified. The estimated value is \$25,000. In the meantime, the Commissioners are reminded to consider if they plan to continue to operate in the commercial garbage collection and if so, does the county want to spend money repairing the 17-year-old vehicle and if they plan on purchasing a newer vehicle? The current 2005 Mack truck would serve as the back up vehicle. Vice-chairman Anderson asked for figures regarding new/used vehicle for garbage collection and figures on the commercial garbage collection. This item was tabled until the next meeting.

CITY OF BYROMVILLE

The Commissioners decided it wasn't necessary to meet with the Byromville City Officials as previously discussed. Byromville's Pro-tem Mayor, has agreed to pay the monthly billing charges and an extra \$2,000 per month until the balance is paid in full.

DOOLY COUNTY BOARD OF COMMISSIONERS
REGULAR MEETING April 19, 2012 Page 4 of 5

BOB JETER

Bob Jeter, Economic Development Coordinator met with the Commissioners to update the Commissioners on the completed Reeves Project. To date, Reeves spent \$6,676,210 in site preparation, land, building and construction. Reeves total investment is \$4,976,210. \$1,700,000 was received from Grants for rail and road. They currently have 38 employees at the Vienna Facility, three lives in Dooly County. They are in the process of hiring three more from Dooly County.

PUBLIC HEARING

Ms. Tammy Godfrey Arnott has applied for a license for the Retail Sale for Off-Premises Consumption of beer at Hope's Diner & BBQ at 824 Pinehurst-Hawkinsville Road. A Public Hearing will be held on May 3rd.

NEW OPEN RECORDS BILL

The 2012 Georgia General Assembly passed House Bill 397, which made changes to the existing open meetings/open records laws. Governor Deal signed this legislation on April 17th and the new changes became effective immediately. ACCG General Counsel Jim Grubiak has issued a memo that outlines some of the changes. The bill states that minutes must be taken during executive section and these minutes are not a part of the open records. Therefore, these minutes will be kept separately from the regular minutes.

SURPLUS VEHICLES

Administrator Sanders reported that the county had four surplus vehicles that were sold on gov.deal- an online auction site. The listed vehicles sold as follows:
1967 fire truck - \$1,700.00, 1975 F-7 cab and chassis -\$1,200.00, 1980 Freightliner Tanker- \$26,000.00 and 1988 Chevrolet Ambulance \$850.00.

COMMISSIONER BARRON

Commissioner Barron expressed concerns about having the Sheriff Department provide a security officer during regular board meetings. His concern is for the safety of the citizens as well as the Board members. Upon motion by Commissioner Barron and seconded by Commissioner Ward, the board voted unanimously to request a security officer during regular board meetings.

DOOLY COUNTY BOARD OF COMMISSIONERS
REGULAR MEETING April 19, 2012 Page 5 of 5

ADJOURNMENT

The Regular Meeting adjourned at 10:55 AM.

NEXT BOARD MEETING

The next Regular Meeting of the Board of Commissioners is scheduled for Thursday, May 3, 2012 at 9:00 AM at the Dooly County Commissioners' Office at 113 N. Third Street in Vienna.

TERRELL HUDSON, CHAIRMAN
DISTRICT #2

DAVID BARRON, COMMISSIONER
DISTRICT #5

EUGENE CASON, COMMISSIONER
DISTRICT #3

HARRY WARD, COMMISSIONER
DISTRICT #4

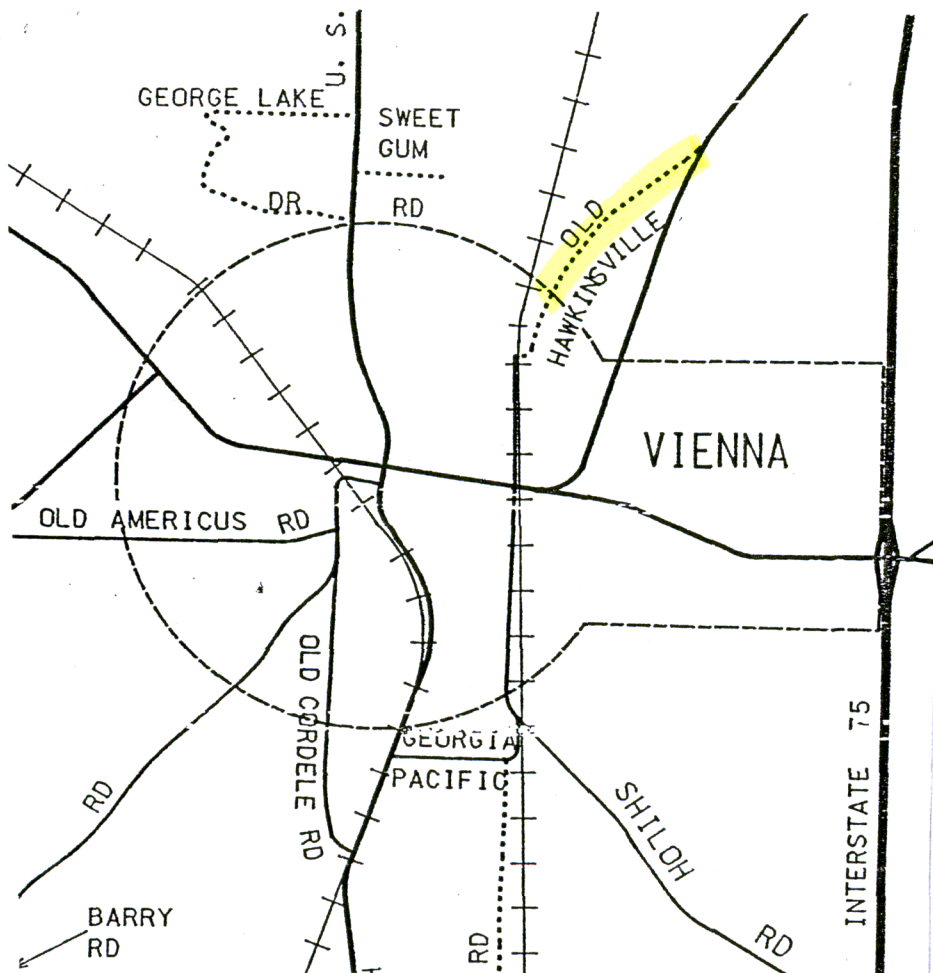
CHARLES ANDERSON,
VICE-CHAIRMAN
DISTRICT #1

LINDA WOODSON
CLERK

04/26/2012

Mr. Joe Owens has requested that the County abandon Old Hawkinsville Road. Mr. Owens and the City of Vienna are the only landowners on this section of road. Mr. Owens has also requested that the City of Vienna abandon the section of this road that is inside the City.

I have confirmed with Vienna City Manager Gail Bembry that the Norfolk Southern Railroad will be closing the R/R Crossing at Woodward Street.



DOOLY COUNTY COMMISSIONERS
113 N. THIRD STREET
ROOM #1
VIENNA, GA 31092
229-268-4228 PHONE
229-268-4230 FAX

MEMO

DATE: April 23, 2012

TO: Charles Anderson, Commissioner
David Barron, Commissioner
Eugene Cason, Commissioner
Terrell Hudson, Chairman
Harry Ward, Vice-Chairman

FROM: Stephen Sanders, Administrator

Mr. Sylvester Granville came by the office today and requested that he and his attorney be placed on the Agenda for the May 3rd County Commissioners Meeting. Mr. Granville alleges that the Board's Agenda Policy is a violation of his right to Free Speech.

Dooly County Commissioners Board Agenda Policy

I. Development of Agenda

The County Clerk shall prepare the Agenda for each Board meeting. Board members, administrative staff members, or County Department Heads may suggest items of business for inclusion on the Agenda.

A majority vote of the Board Members present shall be required for approval of the Agenda. After approval of the Agenda, no item not on the Agenda shall be considered by the Board without the majority vote of all members present. A copy of the Agenda shall be available to the public at the beginning of each meeting.

II. Information for Board Members

For each regular meeting of the Board, the County Clerk shall prepare a packet of information containing the proposed agenda along with other information related to the Board meeting for each Board member. This information shall be sent out to the Board Members on the Friday before the Regular Meeting on Thursday of the following week.

III. Procedures Governing Speakers at Board Meetings

Any person desiring to be heard by the Board must contact the County Clerk to be placed on the Agenda. These requests must be received by the County Clerk by 12:00 Noon on the Friday before the Regular Meeting on Thursday of the following week. Individuals must identify the topic that they wish to discuss with the Board. Individuals are encouraged to submit their presentation in writing.

The Board reserves the right to hear County Department Heads, State Officials, other city/county officials, or other individuals on official business on shorter notice. Otherwise, the Board shall not hear any person who fails to comply with this Policy.

All presentations to the Board should be as brief as possible. A speaker shall be allowed five (5) minutes for presentation, unless an extension is granted by a majority vote of the Board. The County Clerk shall keep time. Persons with a lengthy presentation are encouraged to submit their presentation in writing.

In addition to the above, the following rules shall be followed when appearing before the Board:

1. State your name and address.
2. All remarks shall be made to the Chairman of the Board.
3. No person shall be allowed to make obscene, derogatory or slanderous remarks when addressing the Board.
4. No person shall be allowed to disrupt or interfere with the procedures.

IV. Written Comments

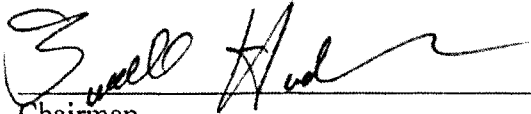
The Board encourages citizens to express opinions on matters of public concern. Citizens may submit written comments to the County Clerk at any time. The Clerk will forward all comments received on to the Board.

V. Policy Change

The County reserves the right to delete, modify, amend or terminate this policy at any time, with or without prior notice.

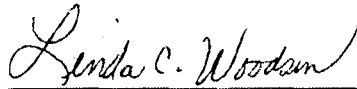
Approved this 19th day of January, 2012.

Dooly County Board of Commissioners



Chairman

Attest:



County Clerk



April 18, 2012

Honorable Terrell Hudson, Chairman
Dooly County Board of Commissioners
113 N. Third St, Room #1
Vienna, Georgia 31092

Dear Chairman Hudson:

A re-inspection of your County and Federal Aid Secondary bridges has been completed. This re-inspection will maintain your County's Compliance with the Federal Law and Regulations requiring all public bridges be inspected biennially. Only bridges as set forth in the Federal Regulations were inspected. A bridge is defined as a structure including supports erected over a depression or an obstruction, such as water, highways, or railways, and having a track or passageway for carrying traffic or other moving loads and having an opening measured along the center of the roadway of more than twenty feet between undercopings or abutments or spring lines including multi-pipes, where the clear distance between openings is less than half of the smaller contiguous opening.

Attached is a report reflecting the results of the above inspection. It is the responsibility of the county government to forward a copy of this report to local municipalities for bridges owned and maintained by city governments within the county boundaries. It is also the responsibility of the county government to advise local school boards of the location of all bridge structures in the county that have load restrictions. This report briefly advises you of the condition of your bridge structures and notes which structures should be posted with load limit signs and which ones should be closed to traffic if conditions do not meet minimum standards according to Federal Law. Those structures requiring posting or closure have been identified within the text with an asterisk (*). It is extremely important that the local jurisdiction comply with Federal Posting and Closing Regulations. Counties not in compliance will not have any projects authorized that utilize federal highway funds until compliance with these regulations has been obtained.

Attached to the report is a copy of the Structure Inventory and Appraisal (SI&A) sheet for each structure in the report. This sheet contains additional information that is not necessarily contained in this written report such as whether or not the bridge rails meet current standards and if delineation signs are present. A Posting Summary sheet of all the structures that require posting showing their load carrying capacities has also been included. Attached to the Posting Summary sheet, you will find a drawing of two load limit signs and a drawing of required bridge closing methods. The R12-1 (Type A) sign is for gross load posting while the R12-5 modified (Type B) sign is for multi-posting. Please note that all structures requiring closing must be properly closed in accordance with the attached methods.

Please note that on the Posting Summary sheet, all bridges marked with a plus sign (+) are presently not posted and require posting. On the same summary sheet, all bridges marked with a pound symbol (#) are presently posted with an inappropriate sign and should be re-posted with a proper type sign and/or proper load limits. The load limit will be in the appropriate column, depending on the type sign recommended. **Posting or closing may require the rerouting of school buses. It is the responsibility of the driver of the school bus, as with**

all Commercial Drivers License (CDL) holders, to abide by all applicable laws regarding load restrictions on any bridge structure.

Assistance in the rehabilitation or replacement of deficient bridges may be obtained through the Local Maintenance and Improvement Grant Program (LMIG). This assistance can include funds for all materials needed to replace or repair drainage structures and bridges. For information on this program, see the website at: <http://www.dot.ga.gov/localgovernment/FundingPrograms/LMIG/Pages/default.aspx> or contact the Local Grants Office at (404) 347-0240.

All structural calculations are based on the inventory stress level. This is the normal design criterion and includes a reasonable factor of safety. Loads exceeding those allowed at the inventory stress level can be applied on an occasional basis without seriously damaging the structure but the operating rating (at the higher operating stress level) should generally not be exceeded without a detailed structural analysis.

The "Recording and Coding Guide for the Structure Inventory and Appraisal of the Nation's Bridges", Report No. FHWA-PD-96-001, may be found at <http://www.fhwa.dot.gov/bridge/mtguide.pdf>. This report will assist with interpretation of the Structure Inventory and Appraisal sheets, attached. If you have specific questions concerning any of the structures in this report, please contact Mr. Bob O'Daniels, of my office, at (404) 635-8189.

Sincerely,



Benjamin F. Rabun, III, P.E.
State Bridge Engineer

BFR/res
Enclosures

cc: Dr. Grady Miles, Superintendent, Dooly County Board of Education
Rodney Hair, Public Works Director, Dooly County Public Works
David Millen, District Engineer, District 3, Thomaston (via email)
Michael Keene, Area Engineer, District 3, Area 3, Perry (via email)
David Huff, State Aid (via email)
Keith Pinckard, Bridge Inspection Supervisor (via email)
Reading File

Georgia Department of Transportation

Posting Summary for Dooly County

	LOCATION ID	STRUCTURE ID	ACTION	H TRUCK	TYPE-3 TRUCK	TIMBER TRUCK	HS TRUCK	3S2 TRUCK
	093-01175F-000.65N	093-0047-0	POSTED	07				
B	093-01585F-000.96N	093-0050-0	POSTED	21	21	26		
B	093-01585F-007.83N	093-0051-0	POSTED	17	17	24	21	28
	093-00010X-002.58W	093-5001-0	POSTED	07				
B	093-00054X-000.60E	093-5006-0	POSTED	04				
	093-00059X-006.35W	093-5010-0	POSTED	14	14	20	17	22
B	093-00060X-002.99E	093-5007-0	POSTED	14	13	19	17	21
B	093-00116X-004.00E	093-5017-0	POSTED	09	10	12	13	17
+	093-00209X-007.63S	093-5025-0	POST FOR	13	13	18	17	20
B	093-00232X-001.66N	093-5028-0	POSTED	17	17	21		27
	093-00275X-000.47S	093-5030-0	POSTED	18	19	24		
+	093-00283X-000.83N	093-5033-0	POST FOR	14	14	18		24
+	093-00291X-003.35N	093-5045-0	POST FOR	19	19	24		

Bridge Posted incorrectly, Reposting required

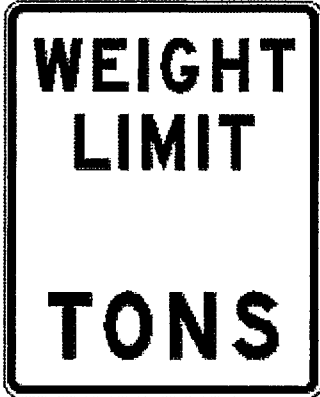
+ Bridge not Posted, Posting Required

B Bridge located on an identifying School Bus Route

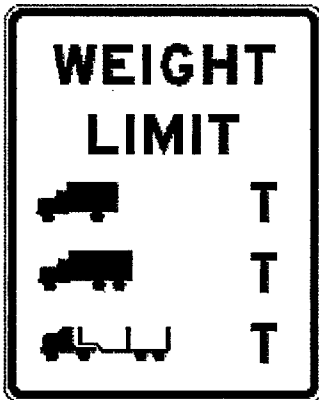
Please indicate which alternate closing method the county uses to close a structure.

Note: It is recommended that advanced weight limit signs be placed.

Georgia Weight Limit Signs



R12-1
GROSS WEIGHT LIMIT SIGN
(Type A)



MODIFIED R12-5
WEIGHT LIMIT SYMBOL SIGN
(Type B)



T

H-TRUCK



T

TYPE 3



T

TIMBER



T

HS-TRUCK

(Add as required)



T

3S2

(Add as required)



T

PIGGYBACK

(Add as required)

Revised 1-25-99

LOCALLY OWNED FEDERAL AID ROUTE BRIDGE INSPECTIONS:

- ① **STRUCTURE ID 093-0043-0 / LOCATION ID 093-00533F-014.40N**
FAS Route 533, CR 317, River Road over Hogcrawl Creek
This bridge structure is in fair condition. However, the joints throughout the structure have failed and should be cleaned and sealed. The approach roadway at both ends of the structure has settled and should be leveled with the deck. The steel H-piling exhibit signs of corrosion and should be cleaned and painted. The pile encasements at piles #1 and #2 of bent #7 are undermined and should be extended to a point two feet below the mud line. Bent #7 also has scoured areas around piles #1 and #2 that need to be repaired after the encasements are added.
- ② **STRUCTURE ID 093-0044-0 / LOCATION ID 093-00679F-002.02E**
FAS Route 679, CR 123, Pinehurst-Byromville Road over Turkey Creek Tributary
This bridge culvert is in satisfactory condition with one to two feet of scour at both ends of the structure. These scoured areas should be repaired to prevent undermining. Vegetation growing in the vicinity of the structure should be cut and removed.
- ③ **STRUCTURE ID 093-0045-0 / LOCATION ID 093-00679F-004.90E**
FAS Route 679, CR 322, Pinehurst-Byromville Road over Little Pennahatchee Creek
This bridge culvert is in satisfactory condition with up to one foot of silt in barrel #1, which should be removed. Vegetation growing in the vicinity of the structure should be cut and removed.
- ④ ***STRUCTURE ID 093-0047-0 / LOCATION ID 093-01175F-000.65N**
FAS Route 1175, CR 324, Shiloh Road over Gumm Creek Tributary
Post for 07 Tons, Type A Sign.
This structure requires posting due to insufficient flexural capacity of the steel superstructure. The following maintenance recommendations are provided to maintain this structure at the current rating. This bridge structure is in fair condition. The failed longitudinal deck joints throughout the structure should be cleaned and sealed. The steel beams throughout the structure should also be cleaned and painted. The two feet of scour and undermining at the southern abutment should be repaired. One of the southern wing walls has separated, is leaning toward the creek, and should be stabilized or replaced. The approach roadway shoulders are high and should be clipped back. Vegetation growing in the vicinity of the structure should be cut and removed.
- ⑤ **STRUCTURE ID 093-0049-0 / LOCATION ID 093-01175F-005.42N**
FAS Route 1175, CR 324, South 7th Street over Pennahatchee Creek
This bridge culvert is in satisfactory condition with minor cracking throughout the structure, which should be monitored for further signs of deterioration. Silt in the barrels should also be removed to allow water to flow properly through the structure. Extensive vegetation blocking both ends of the structure should be removed as well.

⑥ ***STRUCTURE ID 093-0050-0 / LOCATION ID 093-01585F-000.96N**
FAS Route 1585, CR 325, Third District Road over Cedar Creek
At the present time, Post this structure for 21 Tons H-Truck; 21 Tons Type 3 Truck and 26 Tons Timber Truck.

This structure requires posting due to insufficient shear capacity of the concrete superstructure. The following maintenance recommendations are provided to maintain this structure at the current rating. This bridge structure is in fair condition. Spalls in the concrete superstructure deck panels should be repaired. The guardrail on the northern end of the structure has incurred some collision damage and should be repaired. The approach roadway should be leveled with the deck to reduce impact forces on the structure. The erosion in the vicinity of the northern abutment extends under the wheel path and should be repaired.

⑦ ***STRUCTURE ID 093-0051-0 / LOCATION ID 093-01585F-007.83N**
FAS Route 1585, CR 325, Third Dist. Road over South Prong Creek
At the present time, Post this structure for 17 Tons H-Truck; 17 Tons Type 3 Truck; 24 Tons Timber Truck; 21 Tons HS-Truck and 28 Tons Type 3S2 Truck.

This structure requires posting due to insufficient pile capacity of the timber substructure. The following maintenance recommendations are provided to maintain this structure at the current rating. The failed transverse and longitudinal deck joints throughout the structure should be cleaned and sealed. A fence across the stream channel is collecting debris and obstructing normal water flow and should be removed. The lack of railing on this structure should be addressed.

⑧ **STRUCTURE ID 093-0052-0 / LOCATION ID 093-01676F-005.11N**
FAS Route 1676, CR 326, Coney Road over Pennahatchee Creek

This bridge structure is in fair condition with corrosion of the steel substructure units. The H-piles in the widened portion of bent #2 should be cleaned and painted. The concrete spalls with exposed steel reinforcement in the original concrete columns and caps should be cleaned and patched. The deck joints throughout the structure have failed and should be thoroughly cleaned and sealed. The railing and post at the north abutment have incurred collision damage and fallen. This railing should be repaired. Scour in the vicinity of both abutments should be repaired. The approach roadway has settled and should be leveled with the deck to reduce impact forces on the structure. Bent #2 piles have been encased but the forms were left in place. These forms need to be removed to allow full inspection of the piles.

LOCALLY OWNED BRIDGE INSPECTIONS:

- ⑨ ***STRUCTURE ID 093-5001-0 / LOCATION ID 093-00010X-002.58W**
CR 10, Summerville Road over Turkey Creek
Post for 07 Tons, Type A Sign.
- This structure requires posting due to insufficient flexural capacity of the steel superstructure. The following maintenance recommendations are provided to maintain this structure at the current rating.* This bridge structure is in fair condition. The steel beams throughout the structure exhibit signs of corrosion and minor section loss at the bearing areas. These beams should be cleaned and painted. The abutment walls and concrete deck exhibit signs of minor spalling which should be monitored for further signs of deterioration. Accumulated dirt and debris in the deck gutters should be removed to allow proper drainage of the deck. The lack of railing on this structure should also be addressed. Erosion in the vicinity of the western abutment should be repaired.
- ⑩ **STRUCTURE ID 093-5043-0 / LOCATION ID 093-00018X-002.78E**
CR 18, Leavens Road over Turkey Creek
- This bridge culvert is in satisfactory condition with no reported structural deficiencies. Up to 1.4 feet of scour at the inlet end should be monitored for signs of further degradation.
- ⑪ **STRUCTURE ID 093-5042-0 / LOCATION ID 093-00025X-003.82N**
CR 25, Rock Dam Road over Hogcrawl Creek
- This bridge structure is in good condition with scour in the vicinity of bents #4 and #5 which should be repaired to prevent undermining. The deck joints have failed and should be cleaned and sealed. Vegetation growing in the vicinity of the structure should be cut and removed.
- ⑫ **STRUCTURE ID 093-5005-0 / LOCATION ID 093-00045X-003.36E**
CR 45, West Road over Turkey Creek
- This bridge structure is in good condition with the exception of the steel substructure which is in satisfactory condition due to corrosion. All of the steel piling should be cleaned and painted. These piles should be further protected with reinforced concrete encasements extending from two feet below the mud line to a point two feet above normal water. Vegetation growing in the vicinity of the structure should also be cut and removed.

***STRUCTURE ID 093-5006-0 / LOCATION ID 093-00054X-000.60E**
CR 54, Weeks Road over Lilly Branch
Post for 04 Tons, Type A Sign.

(13) *This structure requires posting due to insufficient pile capacity of the timber substructure. The following maintenance recommendations are provided to maintain this structure at the current rating.* This bridge structure is in serious condition with deterioration of the timber substructure. Pile #1 at bent #2; piles #3 and #5 at bent #4; pile #2 at bent #5, and piles #2 and #6 at bent #7 exhibit signs of decay and rot and should be replaced. All of the steel beams exhibit signs of corrosion and should be cleaned and painted. The deck joints throughout the structure have failed and should be cleaned and sealed. Drift at the upstream side at bents #3 thru #5 should be removed to prevent additional accumulation and possible scour. The hole in the deck of span #2 should be repaired. *Due to re-evaluation of the structure, the posting capacity of this structure has been decreased. At the time of the inspection, the posting signs were missing. These signs are required and must be replaced.*

(14) ***STRUCTURE ID 093-5010-0 / LOCATION ID 093-00059X-006.35W**
CR 59, Mt. Vernon Road over Turkey Creek
At the present time, Post this structure for 14 Tons H-Truck; 14 Tons Type 3 Truck; 20 Tons Timber Truck; 17 Tons HS-Truck and 22 Tons Type 3S2 Truck.
This structure requires posting due to insufficient flexural capacity of the steel superstructure. The following maintenance recommendations are provided to maintain this structure at the current rating. This bridge structure is in fair condition. The steel beams throughout the structure are corroded and should be cleaned and painted. The three feet of scour at bent #2, and two feet of scour at the west abutment should be repaired. Accumulated drift and debris in the stream channel should also be removed. Several of the construction components of the left eastern wing wall are missing, which is causing erosion at that location. This wing wall should be repaired and the erosion stabilized. The handrail has incurred collision damage which should be repaired. Both abutments show signs of erosion, these need to be repaired and stabilized.

(15) ***STRUCTURE ID 093-5007-0 / LOCATION ID 093-00060X-002.99E**
CR 60, Goodwin Bridge Road over Turkey Creek Overflow
At the present time, Post this structure for 14 Tons H-Truck; 13 Tons Type 3 Truck; 19 Tons Timber Truck; 17 Tons HS-Truck and 21 Tons Type 3S2 Truck.
This structure requires posting due to insufficient flexural capacity of the steel superstructure. The following maintenance recommendations are provided to maintain this structure at the current rating. This bridge structure is in fair condition. The steel beams throughout the structure should be cleaned and painted. Scour in the vicinity of the western abutment should be repaired. Vegetation growing in the vicinity of the structure should also be cut and removed. The deck joints have failed and should be cleaned and sealed.

16 **STRUCTURE ID 093-5008-0 / LOCATION ID 093-00060X-003.01E**
CR 60, Goodwin Bridge Road over Turkey Creek

This concrete bridge structure is in good condition with minor cracking and spalls in the substructure, caps, and bottom of the prestressed concrete deck panels. These cracks should be sealed and the spalls repaired. The deck joints throughout the structure have failed and should be cleaned and sealed. Extensive vegetation growing around the structure should be removed to provide better access for maintenance and inspection. The approach roadway should be leveled with the deck to reduce impact forces on the structure.

17 **STRUCTURE ID 093-5009-0 / LOCATION ID 093-00062X-001.11S**
CR 62, Templeton Road over Pennahatchee Creek

This bridge structure is in good condition. The deck joints throughout the structure have failed and should be cleaned and sealed. The accumulated debris at bent #3 should be removed. Spalling in the handrail should be sealed. The approach roadway shoulders are high and should be clipped back as well.

18 **STRUCTURE ID 093-5044-0 / LOCATION ID 093-00098X-000.05N**
CR 98, McCay Road over Limestone Creek

This bridge structure is in fair condition with corrosion of the steel substructure. One of the southern wingwalls has broken and should be stabilized. Cracks in the concrete caps at bents #3 over pile #2 and bent #5 over pile #2 should be cleaned and sealed to protect the steel reinforcement within.

19 **STRUCTURE ID 093-5012-0 / LOCATION ID 093-00098X-000.20N**
CR 98, McCay Road over Limestone Creek Tributary

This bridge structure is in satisfactory condition with no reported structural deficiencies. However, the beaver dam located up stream should be removed. Vegetation growing in the vicinity of the structure should also be cut and removed. Cracks in the concrete caps should be cleaned and sealed to protect the steel reinforcement within. It was noted at the time of inspection that cattle fencing had been placed on the downstream end of the structure. While this is not causing any problems at this time, during a storm event this could collect drift and reduce the hydraulic capacity of the bridge.

20 **STRUCTURE ID 093-5013-0 / LOCATION ID 093-00101X-000.50N**
CR 101, Slosyeye Road over Pennahatchee Creek

This bridge structure is in poor condition with corrosion and section loss of the steel superstructure. The steel beams throughout the structure should be cleaned and painted. Accumulated drift around the substructure should be removed. The deck has exposed reinforcing steel associated with previous pile replacement. This reinforcement should be sealed to protect it from corrosion. The replacement piles at bent #4 should be shimmed to provide proper bearing.

21 STRUCTURE ID 093-5047-0 / LOCATION ID 093-00104X-001.67N
CR00104 Pleasant Valley Road Over Little Pennahatchee Creek

This bridge structure is in good condition with no deficiencies reported.

22 STRUCTURE ID 093-5016-0 / LOCATION ID 093-00116X-002.35E
CR 116, Steele Road over Rock Hill Creek

This bridge culvert is in satisfactory condition with extensive cracking in the eastern outlet wing wall which extends into the barrel wall. These cracks should be sealed. The 2 feet of silt in barrel #1 should be removed. The stream channel should also be excavated to provide a better hydraulic section.

23 *STRUCTURE ID 093-5017-0 / LOCATION ID 093-00116X-004.00E
CR 116, Pennahatchee Road over Little Pennahatchee Creek

At the present time, Post this structure for 09 Tons H-Truck; 10 Tons Type 3 Truck; 12 Tons Timber Truck; 13 Tons HS-Truck and 17 Tons Type 3S2 Truck.

This structure requires posting due to insufficient flexural capacity of the steel superstructure. The following maintenance recommendations are provided to maintain this structure at the current rating. This bridge structure is in poor condition. Numerous spalls on the bottom of the deck have exposed the deck reinforcing steel, which has severely corroded. Accumulated dirt should be removed from the deck. The steel beams and caps throughout the structure exhibit signs of corrosion and should be cleaned and painted. The minor scour in the vicinity of the eastern abutment should be monitored for signs of further degradation. The deck joints throughout the structure have failed and should be cleaned and sealed. Vegetation growing in the vicinity of the structure should be cut and removed. The lack of railing on this structure should also be addressed.

24 STRUCTURE ID 093-5018-0 / LOCATION ID 093-00120X-002.34S
CR 120, Nellieville Road over Turkey Creek Tributary

This bridge culvert is in satisfactory condition. Drift at the inlet end should be removed to prevent additional accumulation and possible scour.

25 STRUCTURE ID 093-5019-0 / LOCATION ID 093-00122X-001.93W
CR 122, New Cut Road over Turkey Creek

This bridge structure is in good condition with no reported structural deficiencies. Both abutment wing walls have minor spalling with exposed reinforcing steel. These spalls should be sealed. Vegetation growing in the vicinity of the structure should be cut and removed.

26 STRUCTURE ID 093-5022-0 / LOCATION ID 093-00133X-000.70E
CR 133, Parkers Store Road over Turkey Creek

This bridge structure is in fair condition with no reported structural deficiencies. The concrete deck, superstructure and cap at bent #4 exhibit signs of spalling which should be sealed. The erosion problems in the vicinity of the western abutment should also be repaired.

27

**STRUCTURE ID 093-5023-0 / LOCATION ID 093-00155X-000.74N
CR 155, Liberty Baptist Church Road over Sandy Mount Creek**

This bridge structure is in good condition with no reported structural deficiencies. However, dirt and debris has accumulated in the deck gutters and should be removed. The deck joints have failed and should be cleaned and sealed.

28

***STRUCTURE ID 093-5025-0 / LOCATION ID 093-00209X-007.63S
CR 209, Bowen Road over Sandy Mount Creek**

At the present time, Post this structure for 13 Tons H-Truck; 13 Tons Type 3 Truck; 18 Tons Timber Truck; 17 Tons HS-Truck and 20 Tons Type 3S2 Truck.

This structure requires posting due to insufficient flexural capacity of the steel superstructure. The following maintenance recommendations are provided to maintain this structure at the current rating. This bridge structure is in fair condition. The steel beams throughout the structure should be cleaned and painted. Scour and erosion at the south abutment should be repaired. The deck joints throughout the structure have failed and should be cleaned and sealed. Potholes in the approach pavement at both ends of the structure should be properly patched and the roadway leveled with the deck. The shoulders at both ends of the structure are high and should be clipped back. The gutters are filled with dirt and debris and should also be cleaned. The lack of railing on this structure should be addressed as well. Extensive vegetation growing at both ends of the structure should be removed. ***At the time of inspection the rear posting sign was missing, these signs are required and must be replaced.***

29

**STRUCTURE ID 093-5026-0 / LOCATION ID 093-00215X-004.23N
CR 215, Calhoun Road over Wildcat Creek**

This bridge culvert is in satisfactory condition.

30

***STRUCTURE ID 093-5028-0 / LOCATION ID 093-00232X-001.66N
CR 232, Heath Road over South Prong Creek**

At the present time, Post this structure for 17 Tons H-Truck; 17 Tons Type 3 Truck; 21 Tons Timber Truck and 27 Tons Type 3S2 Truck.

This structure requires posting due to insufficient flexural capacity of the steel superstructure. A replacement structure is required to upgrade this structure to a point where posting is no longer required. The following maintenance recommendations are provided to maintain this structure at the current rating. The concrete piers at bents #2 and #3 have sheared off at one end next to the exterior channel beams reducing the bearing area for the superstructure. ***These piers must be repaired immediately.*** The steel beams throughout the structure exhibit signs of corrosion and should be cleaned and painted. The bridge rail should to be reattached in several locations. Failure to perform recommended repairs will result in a reduced load capacity.

31

***STRUCTURE ID 093-5030-0 / LOCATION ID 093-00275X-000.47S**

CR 275, Mashburn Road over Wildcat Creek Tributary

At the present time, Post this structure for 18 Tons H-Truck; 19 Tons Type 3 Truck and 24 Tons Timber Truck.

This structure requires posting due to insufficient flexural capacity of the steel superstructure. The following maintenance recommendations are provided to maintain this structure at the current rating. The concrete spalls and cracks in the concrete caps and columns throughout the structure should be repaired. Erosion under the caps at both abutments has extended under the approach roadway. These erosion and undermining problems should be repaired. The steel beams throughout the structure exhibit signs of corrosion and should be cleaned and painted. Cracks on the bottom of the deck have exposed the steel reinforcement. These cracks should be sealed. The lack of railing on this structure should also be addressed.

32

STRUCTURE ID 093-5031-0 / LOCATION ID 093-00281X-001.11N

CR 281, Arena Road over South Prong Creek Tributary

This bridge culvert is in good condition, but with accumulated drift and debris in the stream channel. The drift and debris should be removed to prevent further accumulation and the possibility of scour. The accumulated silt located in all barrels should also be removed. Extensive vegetation growing around the structure should be removed.

33

STRUCTURE ID 093-5032-0 / LOCATION ID 093-00281X-004.81N

CR 281, East Railroad Street over Camp Creek

This bridge culvert is in good condition, but with a two to three foot accumulation of silt and gravel which should be removed to allow proper stream flow through the structure.

34

***STRUCTURE ID 093-5033-0 / LOCATION ID 093-00283X-000.83N**

CR 283, St. Johns Road over Camp Creek

At the present time, Post this structure for 14 Tons H-Truck; 14 Tons Type 3 Truck; 18 Tons Timber Truck and 24 Tons Type 3S2 Truck.

This structure requires posting due to insufficient flexural capacity of the steel superstructure. The following maintenance recommendations are provided to maintain this structure at the current rating. This bridge structure is in fair condition. The steel beams throughout the structure are corroded and should be cleaned and painted. The deck joints throughout the structure have failed and should be cleaned and sealed. The timber bulkheads at the abutments have advanced decay and should be replaced after all voids and scour are repaired. The scour and undermining of bent #3 should be repaired. The concrete curbs have incurred collision damage and should also be repaired. Accumulated dirt and debris in the deck gutters should be removed to allow proper drainage of the deck. The lack of railing on this structure should be addressed. *At the time of inspection the northern end posting sign was missing, and the southern sign was not legible. These signs are required and must be replaced.*

35

**STRUCTURE ID 093-5034-0 / LOCATION ID 093-00286X-001.62N
CR 286, Five Points Road over South Prong Creek**

This bridge structure is in satisfactory condition with erosion under the cap at the northern abutment. This erosion should be repaired before serious undermining can occur. The deck joints have failed at both abutments and should be cleaned and sealed. The deck cracking along the panel joints needs to be sealed.

36

***STRUCTURE ID 093-5045-0 / LOCATION ID 093-00291X-003.35N
CR 291, Five Points Road over Camp Creek**

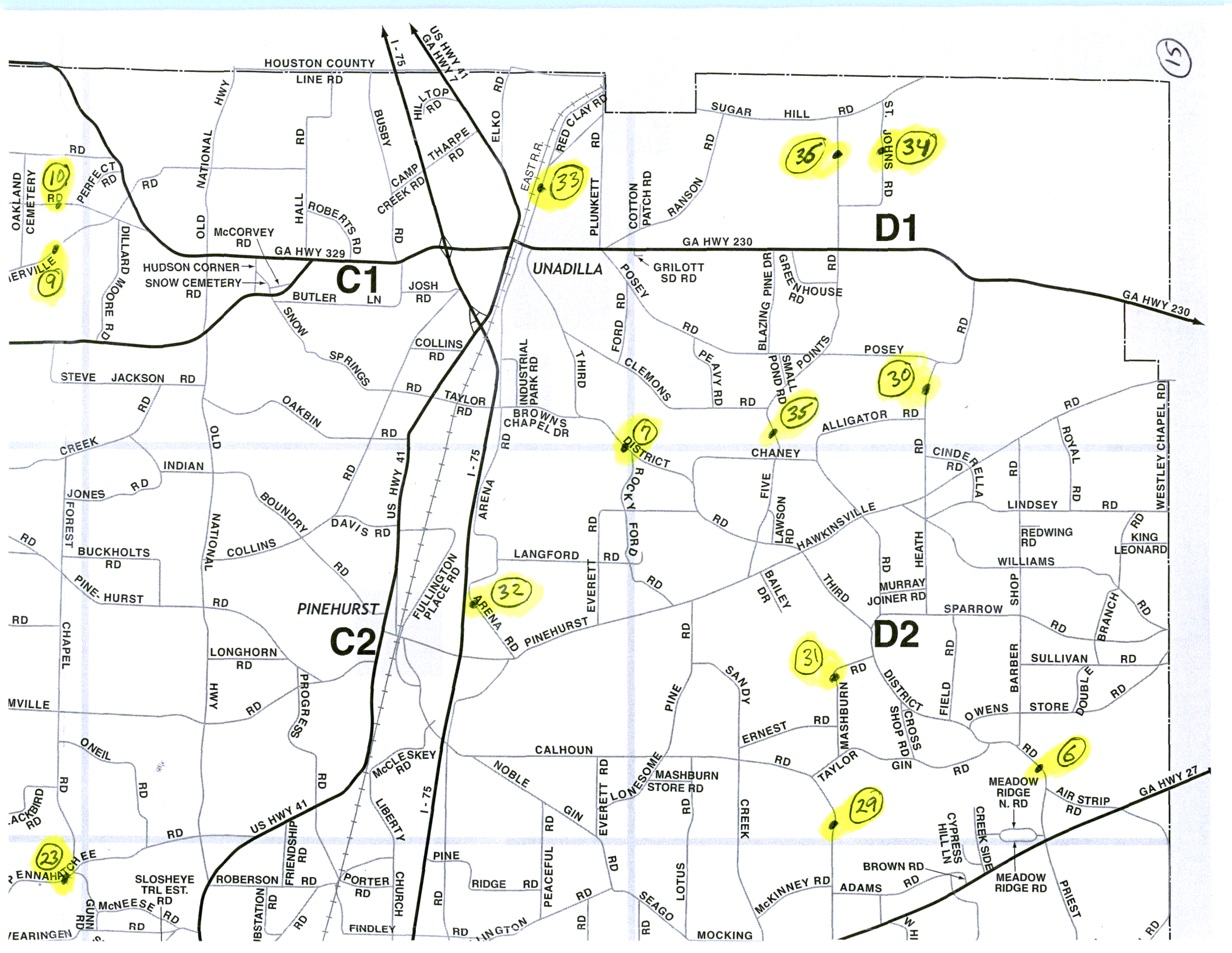
At the present time, Post this structure for 19 Tons H-Truck; 19 Tons Type 3 Truck and 24 Tons Timber Truck.

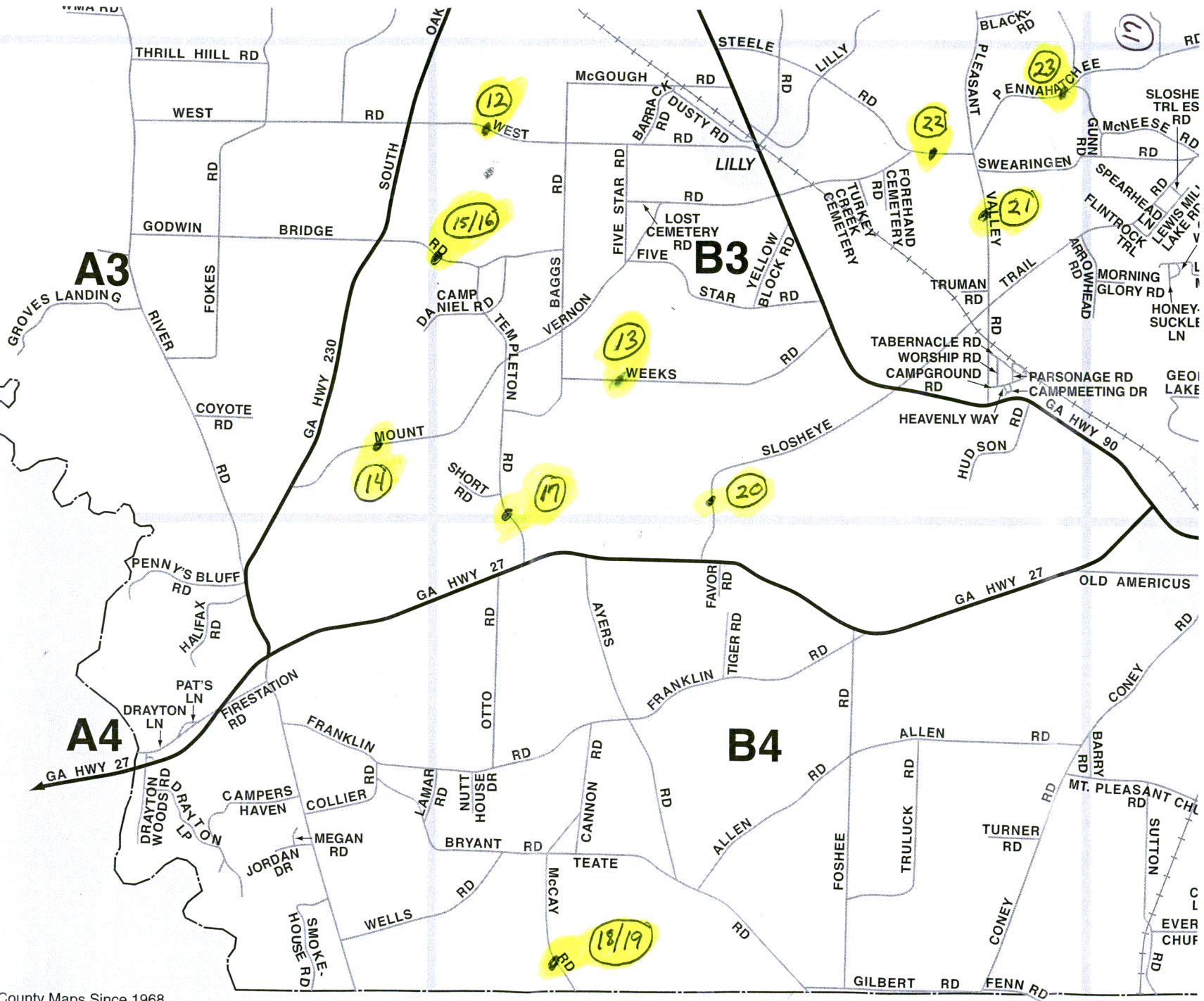
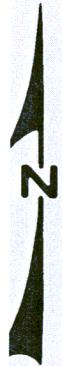
This structure requires posting due to insufficient flexural capacity of the steel superstructure. The following maintenance recommendations are provided to maintain this structure at the current rating. The steel beams throughout the structure exhibit signs of corrosion and should be cleaned and painted. At the time of inspection the northern end posting sign was missing, and the southern end sign was not visible from the roadway. These signs are required and must be replaced.

37

**STRUCTURE ID 093-5036-0 / LOCATION ID 093-00737X-000.32N
CR 737, South 5th Street over Pennahatchee Creek**

This bridge culvert is in satisfactory condition with two feet of scour at the inlet end and 1.5 feet of scour at the outlet end. All scour damage should be repaired to prevent undermining of the structure. Erosion behind the northern right wing wall should also be repaired. The accumulated drift at the inlet end should be removed to prevent additional scour damage. The cracking on the parapets needs to be sealed to protect the steel reinforcement.





Engineering GPP, Inc., Publishing City and County Maps Since 1968.

As shown on this map, while not guaranteed by Southern Engineering GPP, Inc., has been obtained from local sources. Any changes, errors or omissions brought to our attention will be included in our next publication.



April 19, 2012

Mr. Steve Sanders
County Manager, Dooly County
113 N. Third St.
Vienna, GA 31092

Dear Mr. Sanders:

Advanced Disposal Services is pleased to be your contractor for solid waste collection and disposal services. This letter is to notify you of the scheduled rate adjustment for the services provided effective April 1, 2012.

The 2011 rate adjustment in accordance with section 5.2.1, represents the change in CPI-U all Regions (Less Food and Energy) for the month ending February 28, 2012. The CPI-U for that period reflects an increase of **1.86%**.

The new Residential Rate Table effective April 1, 2012 is as follows below.

	Residential Cart Service
April, 1, 2012	\$9.51

Please feel free to call me at 478-405-5000 if you have any questions or need additional information. Thank you for the opportunity to serve the residents of Dooly County.

Sincerely,
Advanced Disposal Services Macon, LLC

A handwritten signature in black ink, appearing to read "A. Cochran", is written over the typed name.

Adam Cochran
General Manager
Advanced Disposal Services Macon, LLC



April 19, 2012

Mr. Steve Sanders
County Manager, Dooly County
113 N. Third St.
Vienna, GA 31092

Dear Mr. Sanders:

Advanced Disposal Services is pleased to be your contractor for solid waste collection and disposal services. This letter is to notify you of the scheduled rate adjustment for the services provided effective April 1, 2012.

The 2011 rate adjustment in accordance with section 5.2.2 represents the change in fuel from the Base Rate of \$2.85 to the 12 month average rate of \$3.89 (\$1.04 difference). This difference multiplied by the gallons used per year (25,168 gallons used per year) equals a Fuel Adjustment Fee of \$26,174.72.

Please feel free to call me at 478-405-5000 if you have any questions or need additional information. Thank you for the opportunity to serve the residents of Dooly County.

Sincerely,
Advanced Disposal Services Macon, LLC

A handwritten signature in black ink, appearing to read "AC", followed by a long horizontal line extending to the right.

Adam Cochran
General Manager
Advanced Disposal Services Macon, LLC

Databases, Tables & Calculators by Subject

FONT SIZE: **+**

Change Output Options:

From: To: **GO**

include graphs

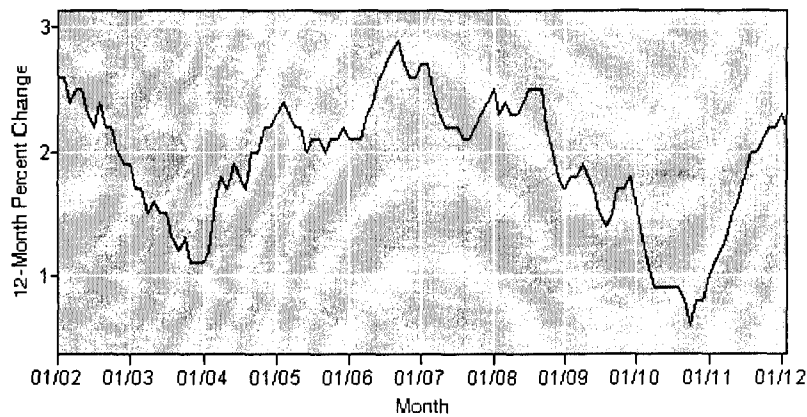
[More Formatting Options](#)

Data extracted on: April 6, 2012 (7:59:50 AM)

Consumer Price Index - All Urban Consumers

12-Month Percent Change

Series Id: CUUR0000SA0L1E
 Not Seasonally Adjusted
Area: U.S. city average
Item: All items less food and energy
Base Period: 1982-84=100



Download: [.xls](#)

Year	Jan	Feb	Mar	Apr	May	Jun	Jul	Aug	Sep	Oct	Nov	Dec	Annual	HALF1	HALF2
2002	2.6	2.6	2.4	2.5	2.5	2.3	2.2	2.4	2.2	2.2	2.0	1.9	2.4	2.5	2.2
2003	1.9	1.7	1.7	1.5	1.6	1.5	1.5	1.3	1.2	1.3	1.1	1.1	1.4	1.7	1.3
2004	1.1	1.2	1.6	1.8	1.7	1.9	1.8	1.7	2.0	2.0	2.2	2.2	1.8	1.6	2.0
2005	2.3	2.4	2.3	2.2	2.2	2.0	2.1	2.1	2.0	2.1	2.1	2.2	2.2	2.2	2.1
2006	2.1	2.1	2.1	2.3	2.4	2.6	2.7	2.8	2.9	2.7	2.6	2.6	2.5	2.2	2.7
2007	2.7	2.7	2.5	2.3	2.2	2.2	2.2	2.1	2.1	2.2	2.3	2.4	2.3	2.4	2.3
2008	2.5	2.3	2.4	2.3	2.3	2.4	2.5	2.5	2.5	2.2	2.0	1.8	2.3	2.3	2.3
2009	1.7	1.8	1.8	1.9	1.8	1.7	1.5	1.4	1.5	1.7	1.7	1.8	1.7	1.8	1.6
2010	1.6	1.3	1.1	0.9	0.9	0.9	0.9	0.9	0.8	0.6	0.8	0.8	1.0	1.1	0.8
2011	1.0	1.1	1.2	1.3	1.5	1.6	1.8	2.0	2.0	2.1	2.2	2.2	1.7	1.3	2.0
2012	2.3	2.2													

[Areas at a Glance](#)
[Industries at a Glance](#)
[Economic Releases](#)
[Databases & Tables](#)
[Maps](#)

[Inflation](#)
[Location Quotient](#)
[Injury And Illness](#)

[Help & Tutorials](#)
[FAQs](#)
[Glossary](#)
[About BLS](#)
[Contact Us](#)

[What's New](#)
[Careers @ BLS](#)
[Find It! DOL](#)
[Join our Mailing Lists](#)
[Linking & Copyright Info](#)

[Inspector General \(OIG\)](#)
[Budget and Performance](#)
[No Fear Act](#)
[USA.gov](#)
[Benefits.gov](#)
[Disability.gov](#)

[Freedom of Information Act](#) | [Privacy & Security Statement](#) | [Disclaimers](#) | [Customer Survey](#) | [Important Web Site Notices](#)

U.S. Bureau of Labor Statistics | Postal Square Building, 2 Massachusetts Avenue, NE Washington, DC 20212-0001
www.bls.gov | Telephone: 1-202-691-5200 | TDD: 1-800-877-8339 | [Contact Us](#)

2011/2012 Dooly County Annual Fuel Worksheet

Months	Rate per month		
1-Apr-11	\$	4.00	
1-May-11	\$	3.98	
1-Jun-11	\$	3.89	
1-Jul-11	\$	3.88	
1-Aug-11	\$	3.83	
1-Sep-11	\$	3.79	
1-Oct-11	\$	3.74	
1-Nov-11	\$	3.87	
1-Dec-11	\$	3.80	
1-Jan-12	\$	3.82	
1-Feb-12	\$	3.95	
1-Mar-12	\$	4.10	
	\$	46.65	Yearly Average per Gallon Price
			\$ 3.89
Base Rate for County	\$	2.85	
Average Rate for year		3.89	
Difference	\$	1.04	
Total Gallons used per year		25168	
Total Fuel Adjustment	\$	26,174.72	



U.S. Energy Information Administration

PETROLEUM & OTHER LIQUIDS

OVERVIEW **DATA** ANALYSIS & PROJECTIONS

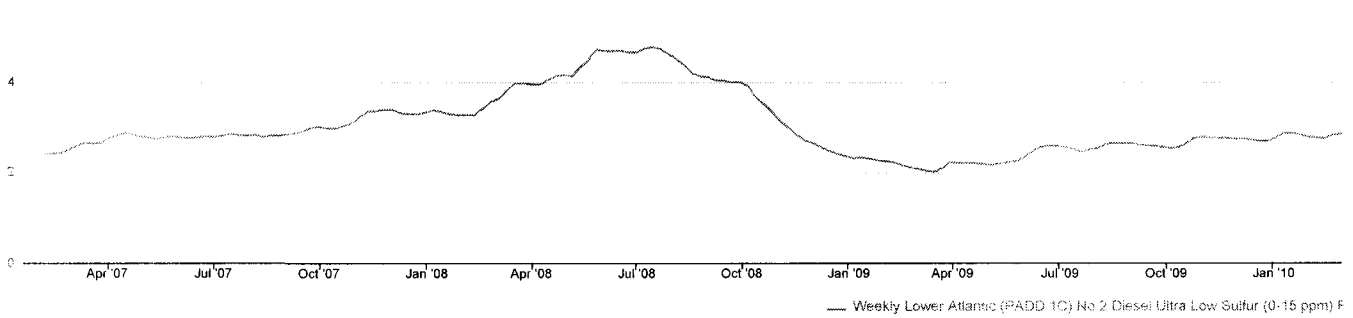
GLOSSARY PADDs

View History: Weekly Monthly Annual

Download Data (XLS File)

Weekly Lower Atlantic (PADD 1C) No 2 Diesel Ultra Low Sulfur (0-15 ppm) Retail Prices

Dollars per Gallon



U.S. Energy Information Administration

Chart Tools

no analysis applied

Weekly Lower Atlantic (PADD 1C) No 2 Diesel Ultra Low Sulfur (0-15 ppm) Retail P

Year-Month	Week 1		Week 2		Week 3		Week 4		Week 5	
	End Date	Value	End Date	Value	End Date	Value	End Date	Value	End Date	Value
2007-Feb	02/05	2.393	02/12	2.417	02/19	2.433	02/26	2.494		
2007-Mar	03/05	2.581	03/12	2.656	03/19	2.643	03/26	2.647		
2007-Apr	04/02	2.760	04/09	2.821	04/16	2.874	04/23	2.833	04/30	2.798
2007-May	05/07	2.773	05/14	2.744	05/21	2.782	05/28	2.799		
2007-Jun	06/04	2.774	06/11	2.765	06/18	2.780	06/25	2.797		
2007-Jul	07/02	2.786	07/09	2.815	07/16	2.846	07/23	2.830	07/30	2.817
2007-Aug	08/06	2.831	08/13	2.785	08/20	2.814	08/27	2.806		
2007-Sep	09/03	2.840	09/10	2.877	09/17	2.924	09/24	2.998		
2007-Oct	10/01	3.012	10/08	2.985	10/15	2.981	10/22	3.031	10/29	3.103
2007-Nov	11/05	3.243	11/12	3.362	11/19	3.362	11/26	3.395		
2007-Dec	12/03	3.392	12/10	3.316	12/17	3.295	12/24	3.289	12/31	3.336
2008-Jan	01/07	3.377	01/14	3.339	01/21	3.287	01/28	3.276		
2008-Feb	02/04	3.284	02/11	3.278	02/18	3.403	02/25	3.568		
2008-Mar	03/03	3.641	03/10	3.822	03/17	3.977	03/24	3.983	03/31	3.955
2008-Apr	04/07	3.950	04/14	4.052	04/21	4.136	04/28	4.169		
2008-May	05/05	4.133	05/12	4.322	05/19	4.485	05/26	4.719		
2008-Jun	06/02	4.692	06/09	4.685	06/16	4.701	06/23	4.658	06/30	4.659
2008-Jul	07/07	4.745	07/14	4.782	07/21	4.734	07/28	4.619		
2008-Aug	08/04	4.520	08/11	4.363	08/18	4.202	08/25	4.127		
2008-Sep	09/01	4.107	09/08	4.037	09/15	4.036	09/22	3.996	09/29	4.002
2008-Oct	10/06	3.912	10/13	3.672	10/20	3.517	10/27	3.344		
2008-Nov	11/03	3.144	11/10	2.989	11/17	2.847	11/24	2.713		
2008-Dec	12/01	2.654	12/08	2.560	12/15	2.476	12/22	2.415	12/29	2.362
2009-Jan	01/05	2.315	01/12	2.331	01/19	2.306	01/26	2.268		
2009-Feb	02/02	2.245	02/09	2.219	02/16	2.161	02/23	2.108		
2009-Mar	03/02	2.067	03/09	2.033	03/16	2.004	03/23	2.083	03/30	2.222
2009-Apr	04/06	2.208	04/13	2.209	04/20	2.205	04/27	2.180		
2009-May	05/04	2.163	05/11	2.193	05/18	2.218	05/25	2.252		
2009-Jun	06/01	2.326	06/08	2.469	06/15	2.559	06/22	2.594	06/29	2.586
2009-Jul	07/06	2.564	07/13	2.512	07/20	2.460	07/27	2.508		
2009-Aug	08/03	2.537	08/10	2.626	08/17	2.649	08/24	2.652	08/31	2.651
2009-Sep	09/07	2.606	09/14	2.601	09/21	2.582	09/28	2.557		
2009-Oct	10/05	2.535	10/12	2.556	10/19	2.665	10/26	2.774		
2009-Nov	11/02	2.786	11/09	2.774	11/16	2.763	11/23	2.757	11/30	2.743
2009-Dec	12/07	2.744	12/14	2.723	12/21	2.694	12/28	2.699		
2010-Jan	01/04	2.777	01/11	2.867	01/18	2.872	01/25	2.828		
2010-Feb	02/01	2.781	02/08	2.763	02/15	2.756	02/22	2.827		
2010-Mar	03/01	2.848	03/08	2.882	03/15	2.898	03/22	2.925	03/29	2.916
2010-Apr	04/05	2.987	04/12	3.040	04/19	3.037	04/26	3.030		
2010-May	05/03	3.081	05/10	3.092	05/17	3.059	05/24	2.986	05/31	2.955
2010-Jun	06/07	2.920	06/14	2.895	06/21	2.921	06/28	2.920		
2010-Jul	07/05	2.889	07/12	2.871	07/19	2.861	07/26	2.880		
2010-Aug	08/02	2.890	08/09	2.962	08/16	2.940	08/23	2.910	08/30	2.886
2010-Sep	09/06	2.880	09/13	2.890	09/20	2.905	09/27	2.904		
2010-Oct	10/04	2.952	10/11	3.011	10/18	3.016	10/25	3.008		

2010-Nov	11/01	3.005	11/08	3.061	11/15	3.133	11/22	3.115	11/29	3.108
2010-Dec	12/06	3.144	12/13	3.187	12/20	3.197	12/27	3.256		
2011-Jan	01/03	3.303	01/10	3.308	01/17	3.392	01/24	3.421	01/31	3.432
2011-Feb	02/07	3.501	02/14	3.524	02/21	3.557	02/28	3.703		
2011-Mar	03/07	3.850	03/14	3.885	03/21	3.878	03/28	3.892		
2011-Apr	04/04	3.923	04/11	4.024	04/18	4.051	04/25	4.038		
2011-May	05/02	4.059	05/09	4.052	05/16	4.005	05/23	3.943	05/30	3.897
2011-Jun	06/06	3.891	06/13	3.905	06/20	3.904	06/27	3.860		
2011-Jul	07/04	3.812	07/11	3.872	07/18	3.912	07/25	3.940		
2011-Aug	08/01	3.918	08/08	3.877	08/15	3.811	08/22	3.788	08/29	3.793
2011-Sep	09/05	3.833	09/12	3.825	09/19	3.792	09/26	3.739		
2011-Oct	10/03	3.699	10/10	3.674	10/17	3.761	10/24	3.775	10/31	3.836
2011-Nov	11/07	3.816	11/14	3.906	11/21	3.918	11/28	3.882		
2011-Dec	12/05	3.862	12/12	3.830	12/19	3.783	12/26	3.752		
2012-Jan	01/02	3.754	01/09	3.820	01/16	3.853	01/23	3.843	01/30	3.848
2012-Feb	02/06	3.846	02/13	3.930	02/20	3.966	02/27	4.063		
2012-Mar	03/05	4.094	03/12	4.096	03/19	4.106	03/26	4.110		
2012-Apr	04/02	4.109								

- = No Data Reported, -- = Not Applicable, NA = Not Available, W = Withheld to avoid disclosure of individual company data

Release Date: 4/2/2012
 Next Release Date: 4/9/2012

Referring Pages:

- Lower Atlantic (PADD 1C) Gasoline and Diesel Retail Prices
- Retail Prices for Ultra Low Sulfur Diesel



1-800-825-1255

search inventory

Select search...

search

newsletter signup

signup

Special financing

Sales

Rental

Company

FAQs

Contact

Live Video

Truck Parts

Front Loaders



compare

2011 MACK MRU613

Stock Number L1659
 Price \$215,500.00
 Mileage
 Engine MP7

Engine manufacturer MACK
 Type Front Loaders
 Transmission 4500RDS



compare

2011 MACK MRU613

Stock Number L1657
 Price \$215,500.00
 Mileage 58,542
 Engine MP7

Engine manufacturer MACK
 Type Front Loaders
 Transmission 4500RDS



compare

2011 MACK MRU613

Stock Number L1658
 Price \$215,500.00
 Mileage 35,218
 Engine MP7

Engine manufacturer MACK
 Type Front Loaders
 Transmission 4500RDS



2011 MACK MRU613

- Featured Inventory (18)
- New Additions (24)
- View All Inventory (158)
- Bucket Truck (3)
- Cab and Chassis (14)
- Cold Plate Van Body (9)
- Container Delivery (1)
- CONTAINERS (6)
- Diggers (0)
- Dump Trailers (1)
- Dump Trucks (3)
- Flatbeds (0)
- Front Loaders (19)
- Grapple Truck (1)
- Hooklift (4)
- Low Boy Trailers (1)
- Lugger Truck (0)
- Misc Truck Bodies (9)
- Pushout Trailers (0)
- Rear Loaders (18)
- Rolloff Trailers (6)
- Rolloff Trucks (37)



compare

Stock Number L1694
Price \$209,500.00
Mileage 57,240
Engine MP7

Engine manufacturer MACK
Type Front Loaders
Transmission 4500 RDS

Service Truck (0)
Side Loaders (0)
Tipper Trailers (1)
Transfer Trailers - Alum (15)
Transfer Trailers - Closed Top (0)
Transfer Trailers - Steel (0)
Truck Day Cab (8)
Truck Sleeper Cab (0)
VAC TRUCKS (2)



compare

2010 MACK MRU613

Stock Number L1656
Price \$199,500.00
Mileage 70,268
Engine MP7

Engine manufacturer Mack
Type Front Loaders
Transmission 4500 RDS

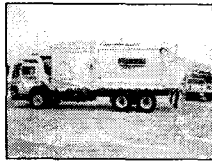


compare

2009 MACK MRU613

Stock Number L1599
Price \$189,500.00
Mileage 82,321
Engine MP7

Engine manufacturer MACK
Type Front Loaders
Transmission 4500 RDS



compare

2009 MACK MRU613

Stock Number L1592
Price \$189,500.00
Mileage 100,672
Engine MP7

Engine manufacturer MACK
Type Front Loaders
Transmission 4500RDS



compare

2009 MACK MRU613

Stock Number L1594
Price \$189,500.00
Mileage 119,550
Engine MP7

Engine manufacturer MACK
Type Front Loaders
Transmission 4500RDS



2008 AUTOCAR N/A

Stock Number TD368
Price \$129,500.00

Engine manufacturer Cummins



compare

Mileage 82,071
Engine ISL

Type Front Loaders
Transmission Allison 4500 Auto



compare

2007 MACK MR688S

Stock Number TE330
Price \$139,500.00
Mileage 142,729
Engine

Engine manufacturer Mack
Type Front Loaders
Transmission Allison 4560 Auto



compare

2007 MACK MR688S

Stock Number TE331
Price \$139,500.00
Mileage 135,249
Engine

Engine manufacturer MACK
Type Front Loaders
Transmission ALLISON AUTO



compare

2007 MACK MR688S

Stock Number TE329
Price \$139,500.00
Mileage 149,124
Engine

Engine manufacturer MACK
Type Front Loaders
Transmission ALLISON 4560 AUTO



compare

2007 MACK MR688S

Stock Number TE328
Price \$139,500.00
Mileage 144,406
Engine

Engine manufacturer Mack
Type Front Loaders
Transmission Allison 4560 Auto



compare

2007 MACK MR688S

Stock Number TG003
Price \$139,500.00
Mileage 106,429
Engine AI

Engine manufacturer MACK
Type Front Loaders

Transmission ALLISON
AUTO



compare

2007 MACK MR688S

Stock Number TE091
Price \$139,500.00
Mileage
Engine
Engine manufacturer
Type Front
Loaders
Transmission



compare

2007 MACK MR688S

Stock Number TE093
Price \$139,500.00
Mileage 99,829
Engine ECM:
100,288

Engine manufacturer Mack
Type Front
Loaders
Transmission Allison 4560
Auto



compare

2005 MACK MR688S

Stock Number TG010
Price \$89,500.00
Mileage 311,975
Engine Ai

Engine manufacturer MACK
Type Front
Loaders
Transmission ALLISON
AUTO

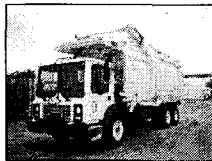


compare

2002 MACK MR690S

Stock Number TG009
Price \$79,500.00
Mileage 380,311
Engine EMI

Engine manufacturer MACK
Type Front
Loaders
Transmission ALLISON
HD 4560P



compare

1999 MACK MR688S

Stock Number TE437
Price \$49,500.00
Mileage 463,534
Engine E7

Engine manufacturer
Type Front
Loaders
Transmission Allison
HT740RS

compare checked items

Click on a listing for more details

04/26/2012

Current Board Members

Board	Member	Term	Date of Original Appointment	Current Term Expires
Board of Assessors - District #1	Chaney, Oscar	6 yr	04/2003	12/31/2015
Board of Assessors - District #2	Bowen, Rodney	6 yr	09/2008	12/31/2017
Board of Assessors - District #3	Wilbanks, Kay	6 yr	08/2008	12/31/2017
Board of Assessors - District #4	Echols, Leon	6 yr	05/1999	12/31/2013
Board of Assessors - District #5	Shirah, James	6 yr	02/2002	12/31/2013

Board of Elections and Registration - District #1	Ford, Gwendolyn	4 yr	01/2010	12/31/2013
Board of Elections and Registration - District #2	Bowden, Mike	4 yr	01/2010	12/31/2015
Board of Elections and Registration - District #3	Gregory, Charlie	4 yr	01/2010	12/31/2013
Board of Elections and Registration - District #4	Davis, Willie	4 yr	01/2010	12/31/2013
Board of Elections and Registration - District #5	Young, Sharal	4 yr	01/2010	12/31/2015

Board of Health	Arflin, Mary	6 yr	06/2000	12/31/2016
Board of Health	Senger, Dr. Mark	6 yr	08/2008	12/31/2017
Board of Health	Ward, Harry	1 yr	09/1998	12/31/2012
Board of Health	West, Alice	6 yr	01/2010	12/31/2015

Chamber of Commerce	Cason, Eugene	1 yr	01/2012	12/31/2012
---------------------	---------------	------	---------	------------

County Commissioner - District #1	Anderson, Charles	6 yr	01/1999	12/31/2016
County Commissioner - District #2	Hudson, Terrell	6 yr	08/1985	12/31/2014
County Commissioner - District #3	Cason, Eugene	6 yr	01/2011	12/31/2016
County Commissioner - District #4	Ward, Harry	6 yr	06/1992	12/31/2014
County Commissioner - District #5	Barron, David	6 yr	01/2007	12/31/2012

Crisp/Dooly Joint Development Authority	Irwin, James Ray	4 yr	07/2003	6/30/2015
Crisp/Dooly Joint Development Authority	Jeter, Robert M	4 yr	03/1995	6/30/2015
Crisp/Dooly Joint Development Authority	Joiner, Neil	4 yr	03/1995	6/30/2013
Crisp/Dooly Joint Development Authority	Ragan, Marvin	4 yr	11/2005	6/30/2013
Crisp/Dooly Joint Development Authority	Ross Jr., Arthur	4 yr	02/2008	6/30/2013

Dept of Behavioral Health & Developmental Disabilities - Region 6 Planning Board	Thomas, Bertha		05/2011	
--	----------------	--	---------	--

DFCS Board	Burton, Judy	5 yr	02/2012	6/30/2014
DFCS Board	Carter, Patsy	5 yr	06/2001	6/30/2012
DFCS Board	Clemons, Dale	5 yr	08/2001	6/30/2016
DFCS Board	Ervin, Betty	5 yr	09/2000	6/30/2015
DFCS Board	McClendon, Marion	5 yr	07/2003	6/30/2013

①

04/26/2012

Current Board Members

Board	Member	Term	Date of Original Appointment	Current Term Expires
Industrial Development Authority	Bowens, Michael	6 yr	08/2008	12/31/2016
Industrial Development Authority	Greer, Kristi	6 yr	01/2011	12/31/2016
Industrial Development Authority	Irwin, James Ray	6 yr	03/1992	12/31/2014
Industrial Development Authority	Jeter, Robert M	6 yr	09/1993	12/31/2012
Industrial Development Authority	Joiner, Neil	6 yr	?	12/31/2014
Industrial Development Authority	Ragan, Marvin	6 yr	?	12/31/2016

Library Board	Causey, Fred	3 yr	07/1990	6/30/2014
Library Board	Turner, Gary	3 yr	02/2012	6/30/2012
Library Board	Johnson, Elaine	3 yr	01/2007	6/30/2012
Library Board	Lester, Earlene	3 yr	01/2009	6/30/2013
Library Board	Newby, Patricia C.	3 yr	05/2002	6/30/2012

Magistrate Court - Chief Magistrate	Willis, William A.	4 yr	03/2002	12/31/2012
Magistrate Court - Magistrate	Anderson, Lonny	4 yr	12/2005	12/31/2012

Middle Flint Regional E911 Authority	Calhoun, Kenny	3 yr	12/2002	12/31/2012
--------------------------------------	----------------	------	---------	------------

Middle Ga Regional Solid Waste Authority	Sanders, Stephen C.	4 yr	03/2004	8/30/2013
Middle Ga Regional Solid Waste Authority	Towns, Jimmy	4 yr	01/2010	8/30/2013

Planning Commission	Averill Sr., John M.	3 yr	01/2006	12/31/2014
Planning Commission	Bowen, Marian	3 yr	01/1997	12/31/2012
Planning Commission	Cape, Ronnie	3 yr	01/1997	12/31/2013
Planning Commission	Chaney, E. K.	3 yr	01/1997	12/31/2012
Planning Commission	Granville, Sylvester	3 yr	08/2010	12/31/2013
Planning Commission	Irwin, James Ray	3 yr	01/1997	12/31/2013
Planning Commission	Jordan, Nathan	3 yr	03/1997	12/31/2012
Planning Commission	Lewis, Sammie	3 yr	12/2008	12/31/2014
Planning Commission	Taylor, Mary	3 yr	06/2003	12/31/2014

Recreation Board	Anderson, Charles	5 yr	09/2007	12/31/2016
Recreation Board	Averill Jr., John	5 yr	07/2001	12/31/2015
Recreation Board	Daniels, Eddie	5 yr	02/2009	12/31/2013
Recreation Board	Daniels, Sr., Michael	5 yr	11/2009	12/31/2014
Recreation Board	Davis, Willie	5 yr	03/1994	12/31/2012
Recreation Board	King, Tywondi	5 yr	01/2011	12/31/2015
Recreation Board	Morgan, Steve	5 yr	05/2006	12/31/2013
Recreation Board	Owens, Joe	5 yr	03/1998	12/31/2012
Recreation Board	Redding, Tammy	5 yr	09/1999	12/31/2016

04/26/2012

Current Board Members

Board	Member	Term	Date of Original Appointment	Current Term Expires
River Valley Regional Commission	Hudson, Terrell	1 yr	07/2009	6/30/2012
River Valley Regional Commission Area Agency on Aging Advisory Council	Allen, Pat		01/2010	n/a
West Central Regional Mental Health, Develop- mental, & Addictive Diseases Board	Bryant, Felita	4 yr	09/2004	06/30/2012



Steve Sanders <sanders.steve@gmail.com>

SHORT TERM WORK PROGRAM UPDATE TO COMPREHENSIVE PLAN

Gerald Mixon <gmixon@rivervalleyrc.org>

Tue, Apr 24, 2012 at 1:46 PM

To: Stephen Sanders <sanders.steve@gmail.com>, Tan Mathis <clerktownofbyromville@yahoo.com>, Byromville <mayor_townofbyromville@yahoo.com>, Jean Weeks <jweeks3@windstream.net>, Gloria Royal <lillyga@sowega.net>, Gloria Royal <gloriaroyal@gmail.com>, Mary Ellen Lucas <pinehurstga@yahoo.com>, Barbara Noles <bnolescc@comsouth.net>, "Gail B. Bemby" <gbbemby@sowega.net>

Good afternoon!

State regulations **require at least one public meeting** be held to give the public an opportunity to review and comment **on the short term work program** you are presently updating. Since your current comprehensive plan is a joint, countywide planning document (Greater Dooly Comprehensive Plan) only one such meeting is required, and the county has agreed to host that meeting in the county commissioners office in Vienna. Any of you who wants to hold an additional meeting in your jurisdiction are certainly free to do so; and if you do I ask two things of you. First, let me know early so I can put it on my schedule (that is, if you expect me to attend), and second, I need to know early enough to get the meeting locations announced in the newspaper notice.

The public meeting(s) should be delayed as long as possible to give you sufficient time to have a good draft prepared and available, but **held before any of your June council/commission meetings**. The first city council/county commission meeting of June is on the 7th (Dooly, Byromville and Pinehurst), so the public meeting(s) must be held before June 7. **The county has agreed to host a meeting on Tuesday the 5th**. If any of you have a policy concerning how much advance notice you give for such public meetings please let me know ASAP; otherwise, the notice for a June 5 meeting should be published in the **May 24 edition of the paper** announcing that your **DRAFT update will be available in your office** for public review **starting Monday, May 28**. If anyone wants to host an additional meeting the notice may need to be in the paper even sooner.

At your city council/county commission meetings on the 7th, 11th and 12th all of you need to pass a resolution authorizing submission (not adoption) of the STWP for mandatory review. It is important that at some date in JUNE you have a meeting at which you pass this resolution-a sample will be provided.

Let me know as soon as possible if you want to host an additional public meeting.

Don't hesitate to call me at 229-942-4068 if there are any questions.

A calendar is inserted below; I hope it does not get distorted in transmission.

Gerald

Gerald Mixon

Planning Director - Americus Office

River Valley Regional Commission

228 West Lamar Street

Americus, Georgia 31709

gmixon@rivervalleyrc.org

www.rivervalleyrc.org

877-819-6348

229-931-2917 (fax)

This email and any files transmitted with it are confidential and intended solely for the use of the addressee. If you are not the intended addressee, then you have received this email in error and any use, dissemination, forwarding, printing, or copying of this email is strictly prohibited. Please notify us immediately of your unintended receipt by reply and then delete this email and your reply. River Valley Regional Commission and its subsidiaries and affiliates will not be held liable to any person resulting from the unintended or unauthorized use of any information contained in this email or as a result of any additions or deletions of information originally contained in this email.

June 2012						
Sun	Mon	Tue	Wed	Thu	Fri	Sat
May 27	May 28	May 29	May 30	May 31	1	2

June 2012						
Sun	Mon	Tue	Wed	Thu	Fri	Sat
	<p><i>May 28</i></p> <p>DRAFT STWP UPDATE AVAILABLE FOR PUBLIC REVIEW</p>					
3	4	<p>5</p> <p>PUBLIC MEETING</p>	6	<p>7</p> <p>DOOLY BYROMVILLE PINEHURST</p> <p>pass transmittal resolution</p>	8	9
10	<p>11</p> <p>DOOLING VIENNA</p> <p>pass transmittal resolution</p>	<p>12</p> <p>LILLY UNADILLA</p> <p>pass transmittal resolution</p>	13	14	15	16
17	18	19	20	21	22	23

June 2012						
Sun	Mon	Tue	Wed	Thu	Fri	Sat
				DOOLY		
24	25	26	27	28	29	30
	VIENNA	UNADILLA				

PUBLIC NOTICE

The Dooly County Commissioners are accepting proposals for the installation of a new metal roof on the Northside Senior Center, located at 1606 Borum Street in Unadilla. Specifications for this project are available upon request from the Dooly County Permits Office at 208 W. Union Street in Vienna (229-268-6696). The deadline for proposals is 5:00 PM on Friday, May 18, 2012.

04/25/2012

The Dooly County Commissioners are accepting proposals for the installation of a new metal roof on the Northside Senior Center, located at 1606 Borum Street in Unadilla.

The scope of work for this project includes:

1. Remove all existing foam roofing.
2. Install new trusses with 4/12 pitch with 12 inch overhang 24 inch on center.
3. Anchor truss system to existing building.
4. Decking should include 7/16 OSB and 15 pound felt.
5. Install OSB on gable ends and cover with vinyl.
6. Install vinyl on eaves and boxing.
7. Install 29 gauge metal roofing that matches the color of the adjoining building.
8. Raise all existing plumbing vents above new roof.
9. Raise the existing kitchen hood vent above the new roof.
10. Raise any gas pipe vents above the new roof.
11. Remove all old roofing material and construction material from site.
12. Install gutter and down spouts.
13. Relocate the existing electrical service if required by Georgia Power Company to provide adequate spacing under the truss overhang.
14. Provide proof of workers compensation insurance.
15. Provide proof of general liability insurance.
16. Provide copy of contractor's license.
17. Provide Vendor Affidavit and Agreement per OCGA 13-10-91.
18. All work will be subject to inspection by the Dooly County Building Inspector and must comply with all applicable building codes.

Proposal – new roof for Northside Senior Center

To: Dooly County Building Permits Office
208 W. Union Street
Vienna, GA 31092
229-268-6696

From: _____ (Company Name)

_____ (Address)
_____ (Address)
_____ (Representative's Name)
_____ (Phone Number)

I hereby propose to install a new roof on the Northside Senior Center that meets or exceeds the specifications dated 04/25/2012 for a total price of \$_____.

I understand that the Dooly County Commissioners will review all proposals at their 06/07/2012 meeting. If I am awarded this contract, I agree to begin work on this project by _____ (date) and estimate that the project should be completed by _____ (date).

Signature Date

(Along with this Bid Sheet, the Bidder should also provide the information requested in Items #14, #15, and #16 of the specifications. Bidder should also include a completed Vendor Affidavit and Agreement per OCGA 13-10-91. The deadline for proposals to be submitted to the Dooly County Permits Office is 5:00 PM on Friday, May 18, 2012.)

STATE OF GEORGIA

COUNTY OF DOOLY

VENDOR AFFIDAVIT & AGREEMENT

By executing this affidavit, the undersigned contractor verifies its compliance with O.C.G.A. § 13-10-91, stating affirmatively that the individual, firm or corporation which is engaged in the physical performance of services on behalf of DOOLY COUNTY has registered with, is authorized to use and uses the federal work authorization program commonly known as E-Verify, or any subsequent replacement program, in accordance with the applicable provisions and deadlines established in O.C.G.A. § 13-10-91. Furthermore, the undersigned contractor will continue to use the federal work authorization program throughout the contract period and the undersigned contractor will contract for the physical performance of services in satisfaction of such contract only with subcontractors who present an affidavit to the contractor with the information required by O.C.G.A. § 13-10-91(b). Contractor hereby attests that its federal work authorization user identification number and date of authorization are as follows:

Federal Work Authorization User Identification Number

Date of Authorization

Name of Contractor

Name of Project

Name of Public Employer

I hereby declare under penalty of perjury that the foregoing is true and correct.

Executed on _____, ___, 201__ in _____ (city), _____ (state).

Signature of Authorized Officer or Agent

Printed Name and Title of Authorized Officer or Agent

SUBSCRIBED AND SWORN BEFORE ME

ON THIS THE _____ DAY OF _____, 201__.

[NOTARY SEAL]

NOTARY PUBLIC

My Commission Expires: _____